

•

-

•

•

•

:

Functional approach	-
Structural approach	-

.

:

.1909

.

.

:

.

-1

-2

-3

.

(..)

⋮ _____ ⋮

Functional criteria

" "

"1

" "

" "

" " " "

¹ . the world Bank "Involving NGOS in bank supported activities operational directive/1989,p.1-6.

/

(social justice)

(solidarity)

.community based

يتحدد عملها في حقول المشروعات الإنمائية، الطوارئ، إعادة التأهيل، وكذلك ثقافة التنمية والدفاع عن الحقوق الاقتصادية والاجتماعية.

more empowered

2

² . UNCTAD,(Report of the meeting of the role of NGOs in the development of the least developed countries) kathemandy ,1989,p.6.

(1920-1864)

-1

-2

-3

⋮
⋮
⋮

⋮

⋮

⋮

⋮

⋮

⋮

" "

" "

.

.

.

.

.

1926
1958 1936 36

John Gulick

3

36

(-)

			:1
			(1961
6	0	6	1919-1890
8	4	4	1942-1920
19	9	10	1958-1943
3	0	3	
36	13	23	

³ . john Gulick, Tripoli, a modern arab city, published in 1967, Harvard university press (Cambridge).

1920

(-) :2			
1961			
14	7	7	
22	6	16	
36	13	23	

%44.4

%16.6

2006

:

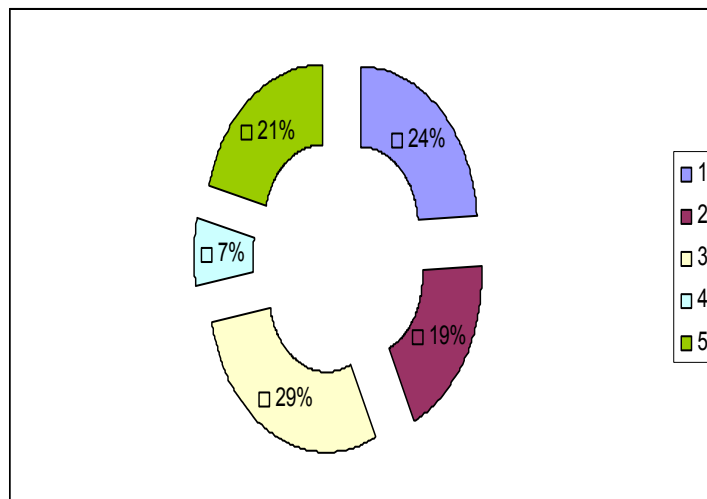
:

-1

(% 24)

(% 19) (3000)
 (% 29) (6000 3000)
 (10) (% 7) (10000 6000)

:3	
%24	3000
%19	6000 -3000
%29	- 6000 10.000
%07	10.000
%21	



:

-2

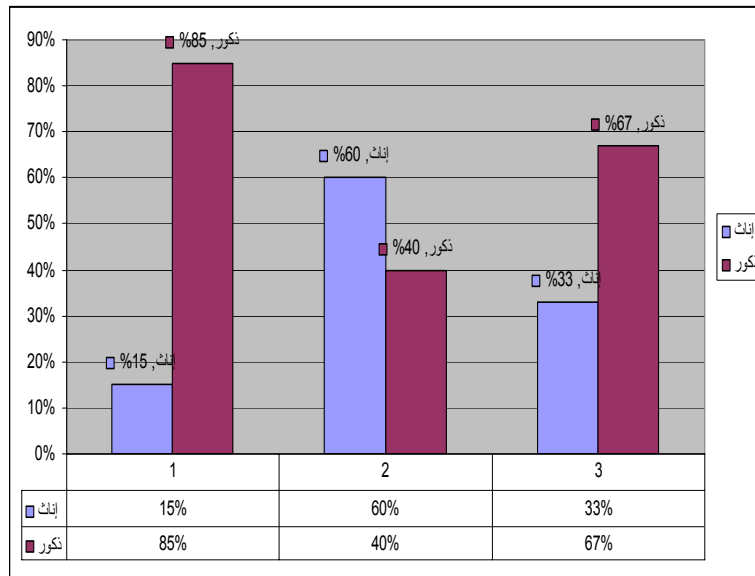
(%15)

(% 60)

.(%33)

% 35

:4		
%85	%15	
%40	%60	
%67	%33	
%192.00	%108.00	



: -3

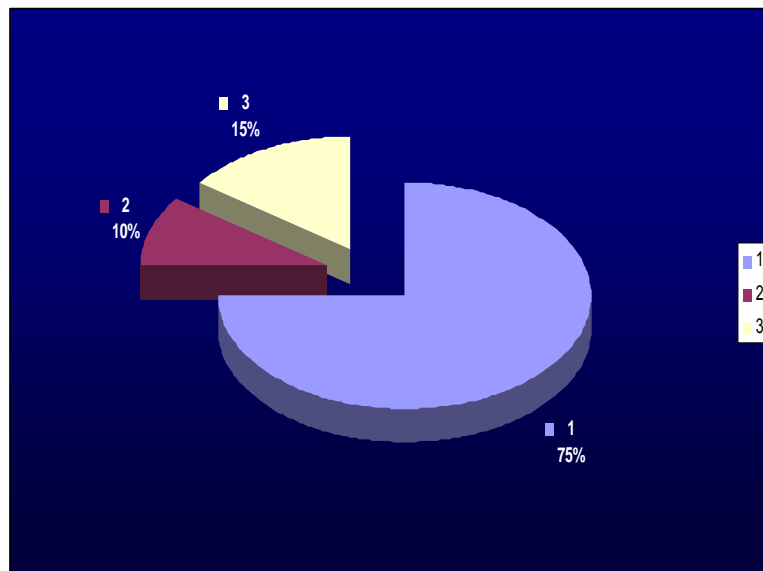
(% 90)

(%80)

3

(12 15)

:5	
%75	
%10	
%15	
%100.00	



(%80)

:

"

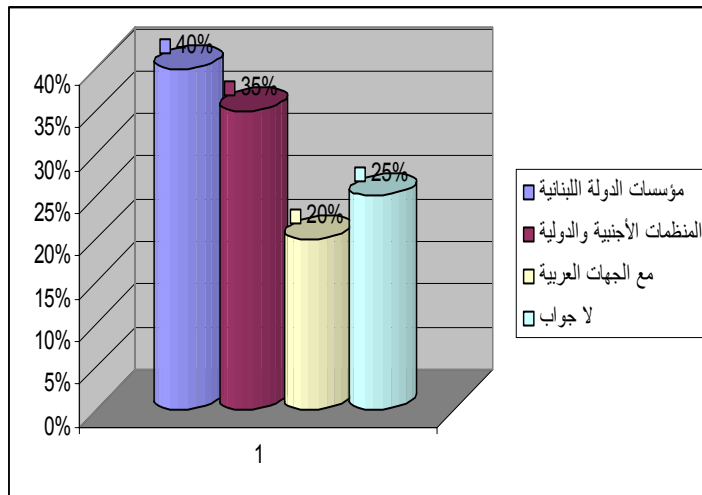
"

)

(% 40)

.(...

:6	
%40	
%35	
%20	
%25	
%120.00	

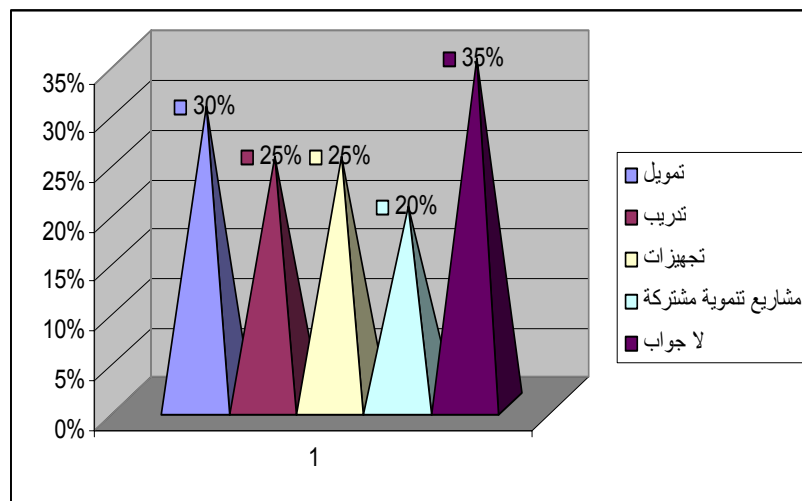


(% 20) (30%) (% 35)

(% 30 – 20)

.(%30)

:7	
%30	
%25	
%25	
%20	
%35	
%135.00	



(%60)

- 5

(%80)

(%15)

(%40)

(%30)

(%20)

(%15)

(%60)

(accountability)

-6

.(%35)

(%65)

(%55)

.(%75)

3

(%55)

(%65)

(%85)

(%80)

: -7

(%65)

